



# FACT SHEET

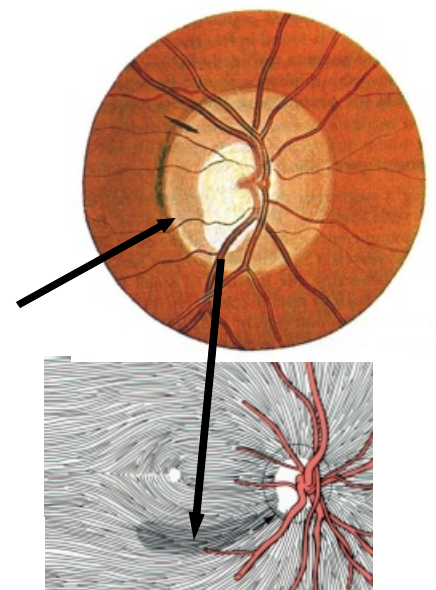
## Glaucoma Blind Patches: Mobility and Safety

Low vision may not necessarily show as reduced ability to read the letters on a sight chart. Many conditions cause blind patches in the general field of vision.

Depending on how the field loss presents dictates the sort of disability the patient might experience and also the sort of rehabilitation required.

Glaucoma is caused by damage to the optic nerve which carries visual stimuli to the brain.

If the optic nerve is damaged the vision associated with this zone will be lost. Most commonly, glaucoma affects superior and inferior fields of vision but can also impact side vision. Central vision, measured on a Sight Test Chart remains excellent unless the disease is very advanced.



# Glaucoma Blind Patches

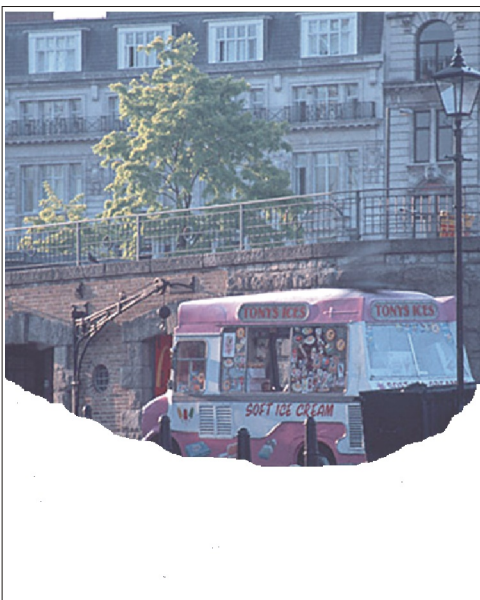
Activities most of us take for granted can become real endurance tasks for people with field restrictions.



Imagine trying to do something as normal as walking to the ice cream van.



A superior field loss is not too bad - the obstacles on the way to the van are still clearly visible.



However, avoiding low obstacles such as the bollards on the way to the ice cream van when the inferior field is lost, is extremely difficult.